

National Park Service Biological Resource Management Division



Exotic Plant Management Teams

Alaska

**Mid-Atlantic
Cooperative**

California

**National Capital
Region**

**Chihuahuan Desert/Southern
Shortgrass Prairie**

**North Coast
Cascades Network**

Colorado Plateau

Northeast

Florida/Caribbean Partnership

Northern Great Plains

Great Lakes

Northern Rockies

**Gulf
Coast**

**Pacific
Islands**

Lake Mead

Southeast



Worthington Glacier, AK - Photo by Judy Daniels



Haleakala NP, Maui - Photo by Judy Daniels

EXPERIENCE
YOUR
AMERICA

National Park Service Biological Resource Management Division



Mid-Atlantic Cooperative Exotic Plant Management Team

EXPERIENCE
YOUR
AMERICA



**Comprised of
NPS staff,
volunteers,
SCA, and
private
enterprise
(not shown)**

Mid-Atlantic Cooperative Exotic Plant Management Team Host and Partner Parks

National Park Service
U.S. Department of the Interior



Parks	Acres
Appomattox Court House National Historical Park	1,726
Booker T. Washington National Monument	234
Colonial National Historical Park	9,317
Eisenhower National Historic Site	691
Fredericksburg and Spotsylvania National Military Park	10,267
George Washington Birthplace National Monument	466
Gettysburg National Military Park	5,899
Petersburg National Battlefield	3,305
Richmond National Battlefield Park	1,499
Shenandoah National Park	191,194
Thomas Stone National Historic Site	315
Total Acreage	224,913

Calculations based on Lambert Conformal Conic (Conterminous US) projection



National Park Service Biological Resource Management Division



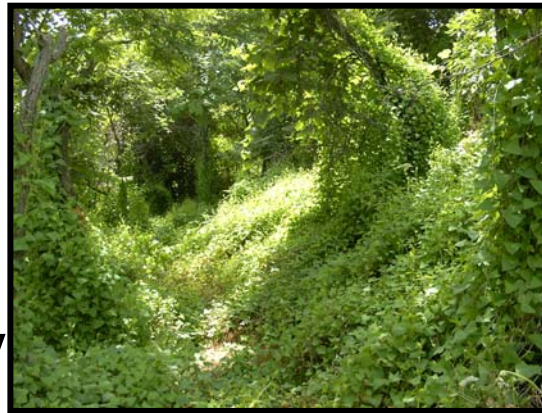
EXPERIENCE
YOUR
AMERICA

Plants
types
included
annuals,
perennials,
grasses,
shrubs, and
trees

Mid-Atlantic

Top Ten Species

- Phragmites
- Mile-a-minute
- Multiflora rose
- Japanese barberry
- Autumn olive
- Privet
- Ailanthus
- Mullein
- Japanese stiltgrass
- Norway maple



Mile-a-minute



Phragmites



Ailanthus



Multiflora rose

National Park Service Biological Resource Management Division



Mid-Atlantic Control



Mapping a control unit with GPS



Cutting Phragmites using a weed-whip



Cutting bamboo using chainsaw

EXPERIENCE
YOUR
AMERICA

Control work included up-rooting, cutting, weed-whacking, as well as foliar, basal, and cut-stump herbicide applications

National Park Service Biological Resource Management Division



EXPERIENCE
YOUR
AMERICA

Mid-Atlantic Control



Foliar
spraying
Japanese
stiltgrass



Stump herbicide application
on a 4-foot Ailanthus



Basal
spraying
privet bush

**Safety is
emphasized
with all
operations**

**Emphasized
via: state
pesticide
certification,
equipment
safety
briefings,
and daily
tailgate safety
discussions**